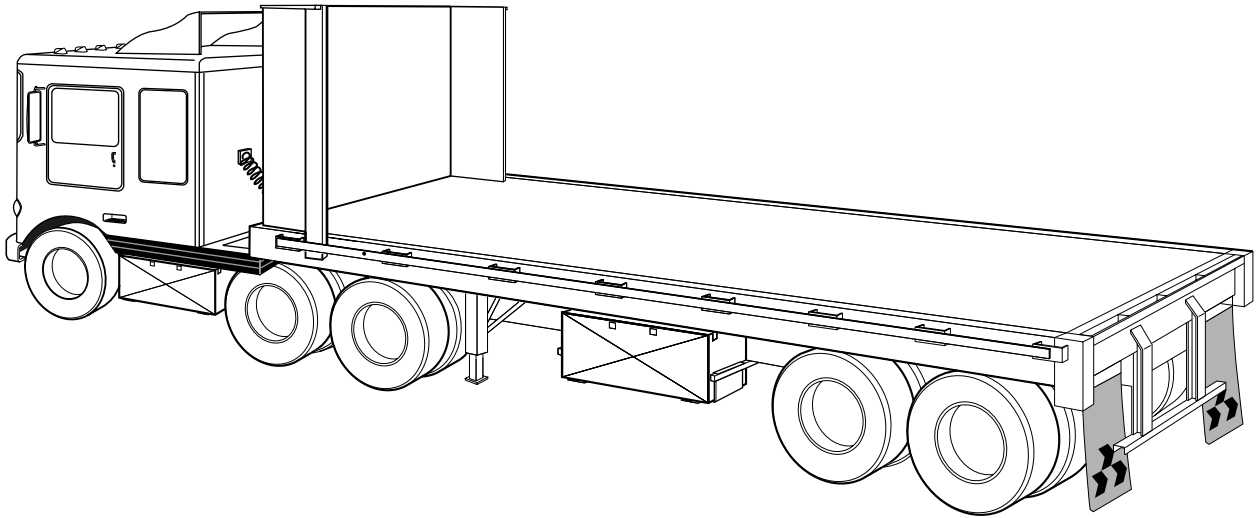


# STORMOR Boxes

Installation, Maintenance,  
and Safety Instructions

Double Box Mounting System



Attention Dealers:  
Please give this manual to  
the customer when the  
product is delivered.

Indianapolis, IN • Omaha, NE • Hamburg, PA • Streetsboro, OH • Burlington, Ontario (800) 535-9545



# STORMOR Boxes

Aero Industries manufactures various sizes of locking, watertight STORMOR boxes which can be mounted to your trailer. STORMOR boxes enhance the appearance of your trailer while offering secure storage for items essential to the efficient operation of your rig.

**Important:** This manual explains how to install, use and maintain the STORMOR Boxes on your trailer. Be sure to read the entire manual before beginning your STORMOR Box installation.

Two kinds of special explanations will appear in the manual. These are Warning and Note. Be sure to read and follow them.

**⚠ Warning:** Possible danger to the operator or a bystander. Injury to the installer or bystander may result if this information is ignored.

**Note:** Contains additional information about a feature or step critical to the installation of the STORMOR Boxes.

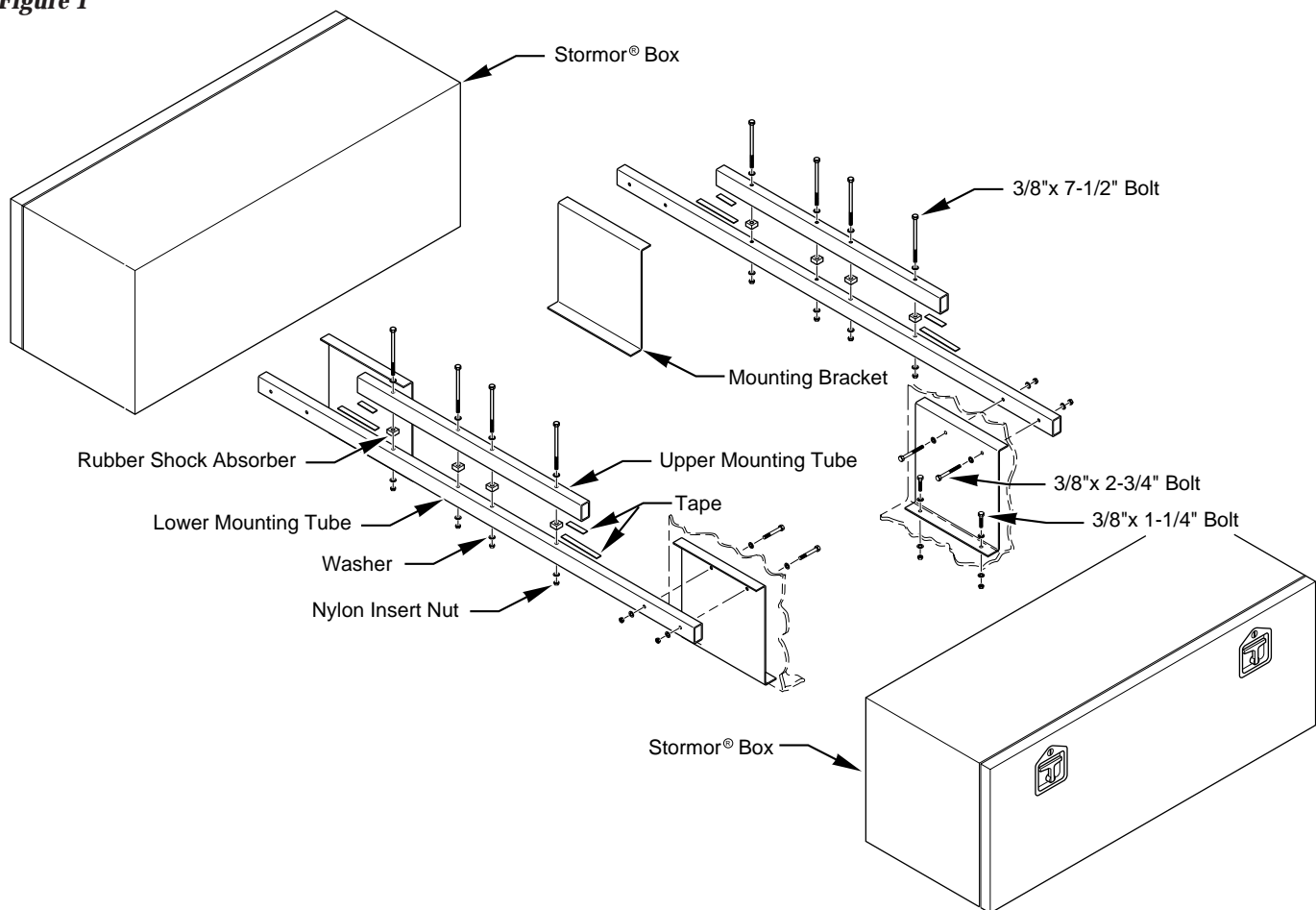
## STEP 1

### Preparing For Installation.

1. Check your hardware package to be sure you have all the parts listed on the outside. The package for mounting both the dual box and single box versions is labeled: "Package 0631-960666 Alum Dual Box Mtg."

**⚠ Warning:** If you are installing only one STORMOR Box, you must also install a stabilizer bar (see STEP 5 and Figure 13). Failure to do so could result in serious injury and/or physical damage.

Figure 1



# STORMOR Boxes

Figure 2

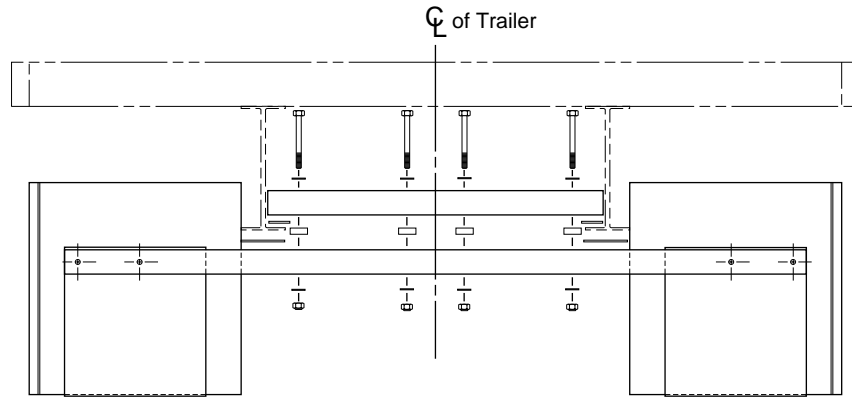
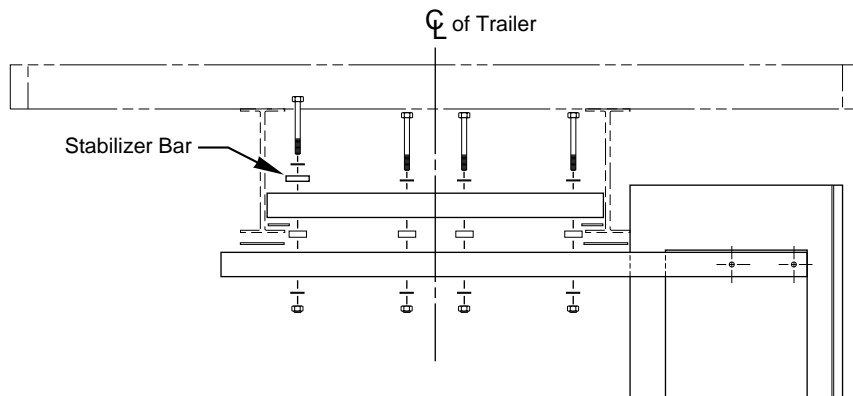


Figure 3

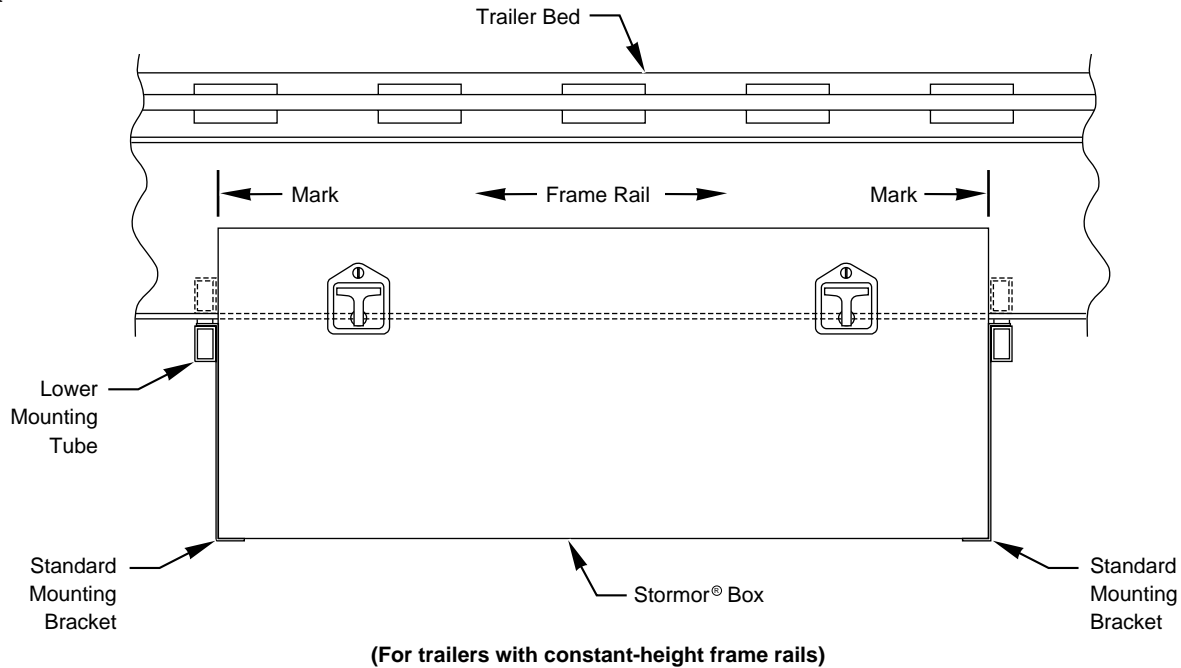


# STORMOR Boxes

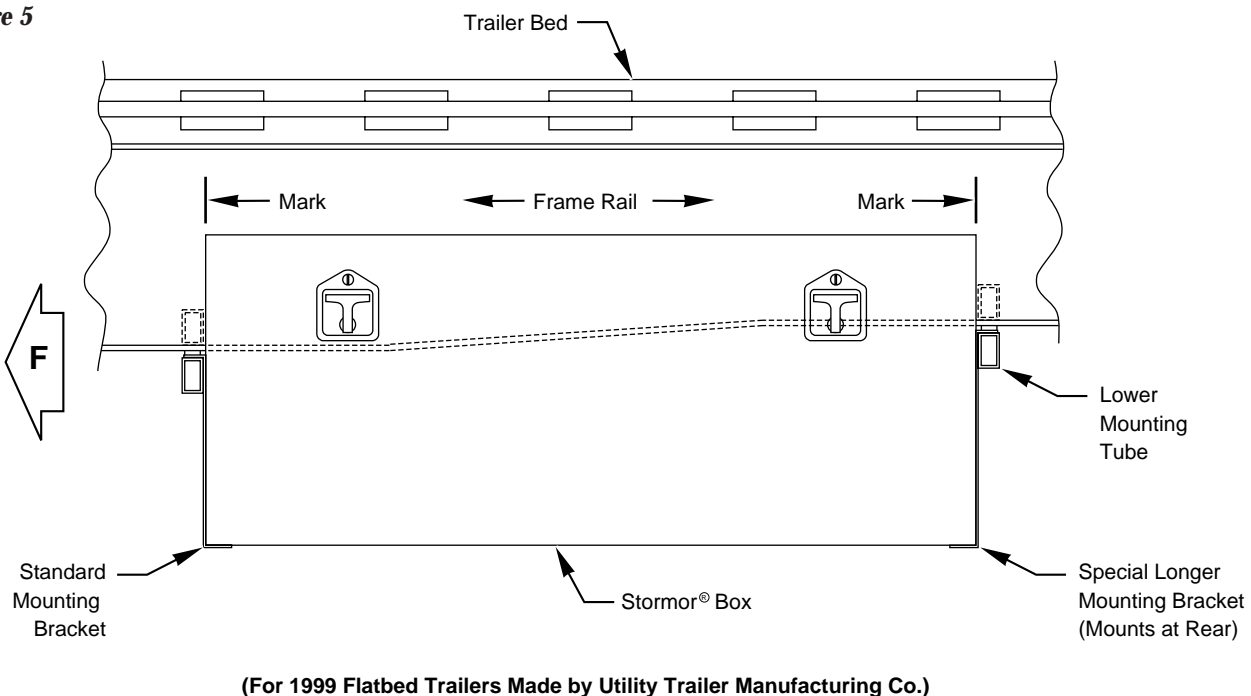
2. Decide where you want to mount the STORMOR boxes on the trailer. Measure to ensure that there is enough room to do so. Mark two places on the frame rails 60 inches apart (if you have the 60-inch model) or 48 inches apart (if you have the 48-inch model). See Figures 4 and 5.

3. If you are mounting STORMOR Boxes on the spread of a flatbed trailer made by the Utility Trailer Manufacturing Company, disregard Figure 4 and refer to Figure 5. The spread is the area between the rear axles. Use a standard mounting bracket for the forwardmost end of each box. Use a special mounting bracket for the rearmost end of each box.

**Figure 4**



**Figure 5**

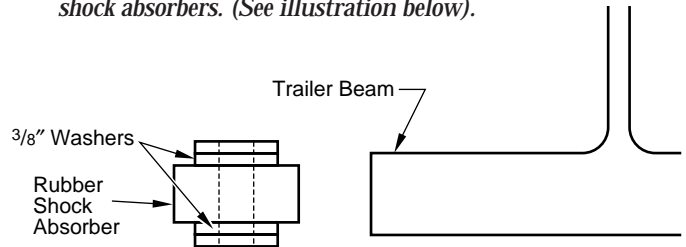


## STEP 2

### How to Install the Mounting Tubes.

1. The upper mounting tube is provided to you longer than needed. Cut an equal amount off each end as shown in Figure 6, so that the tube will fit between the frame rails of your trailer. Leave  $\frac{1}{4}$ " clearance between each end of the upper mounting tube and the frame rails.
2. Attach two pieces of thick rubber tape (included in the hardware package) to the upper and lower mounting tubes as shown in Figure 7.
3. Assemble the two mounting tubes to the trailer's frame rails as shown in Figures 1, 2, and 3. Make sure the mounting tubes are square with the frame rails and that they do not interfere with air hoses, electrical wiring, etc. Tighten the four  $\frac{3}{8}$ " x  $7\frac{1}{2}$ " bolts.

*Note: The rubber shock absorbers are  $\frac{3}{4}$ " thick. If the flange on the beam is greater than  $\frac{3}{4}$ ", install  $\frac{3}{8}$ " washers on the top and bottom of the shock absorbers until the thickness is greater than the flange. This will allow for compression of the shock absorbers. (See illustration below).*



4. Cut the second upper mounting tube to the same length as the tube you cut earlier. Assemble it with the remaining lower mounting tube as shown in Figures 4 and 5. Tighten the bolts just enough to hold the tubes in place, but still allowing the assembly to be slid forward and backwards on the frame rails.

Figure 6

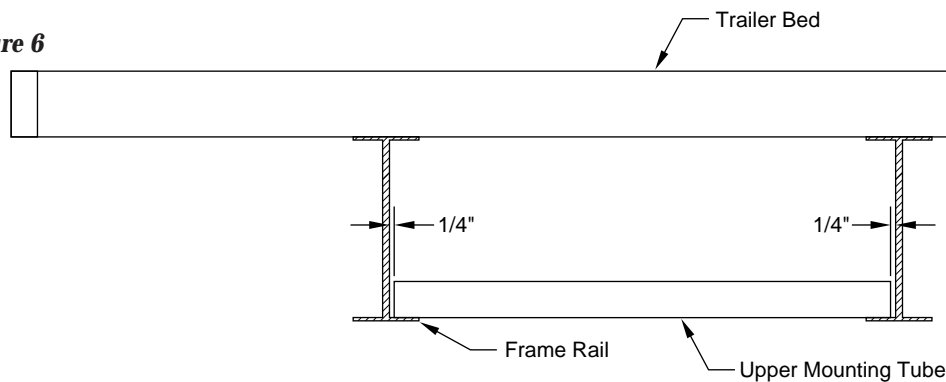
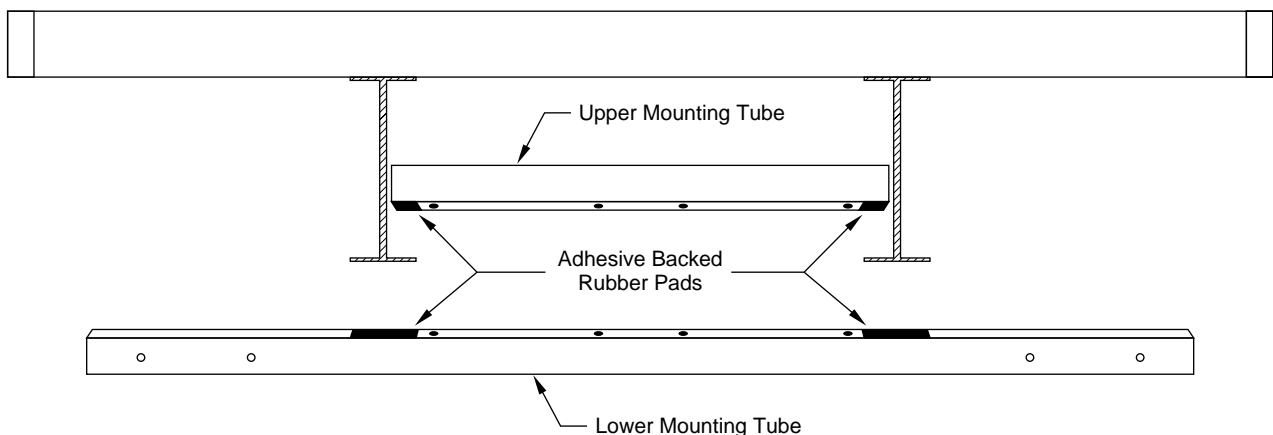


Figure 7



# STORMOR Boxes

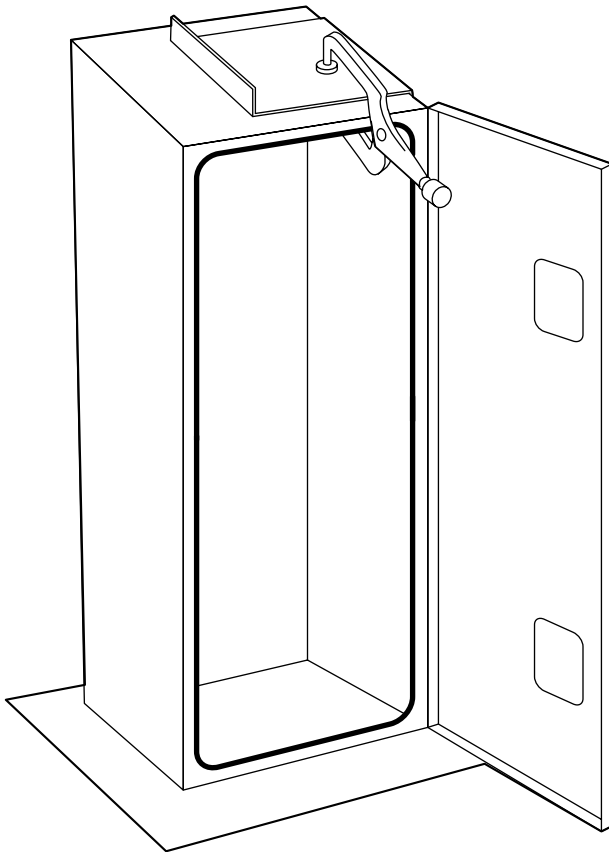
## STEP 3

### How to install the mounting brackets onto the STORMOR Boxes.

*(Do this before mounting them to the trailer.)*

1. See Figure 8. Stand one of the boxes upright on a piece of its cardboard container (to prevent scratching the surface.) The end of the box that will be closest to the front of the rig should be the one facing up.
2. Locate and temporarily clamp one of the box mounting brackets as shown in Figure 9 on the end facing up.
3. Use a  $13/32$ " drill bit to drill the holes in the locations shown in Figure 9.
4. Use  $3/8$ " x  $1 1/4$ " bolts, washers, and nylon insert nuts provided in the hardware package to attach the mounting brackets as shown in Figure 9.

Figure 8



5. Perform this step only if you are mounting STORMOR boxes on the spread of a 1999 flatbed trailer made by the Utility Trailer Manufacturing Company. The "spread" is the area on the frame rails where they taper down to a shorter height. Otherwise, go to step 3.6 now.

Turn the box over and attach the special mounting bracket on the other end in the same way as you did for the first mounting bracket. Refer to Figures 8 and 9.

6. Turn the box over and attach another mounting bracket on the other end in the same way as you did for the first mounting bracket. Refer to Figures 8 and 9.

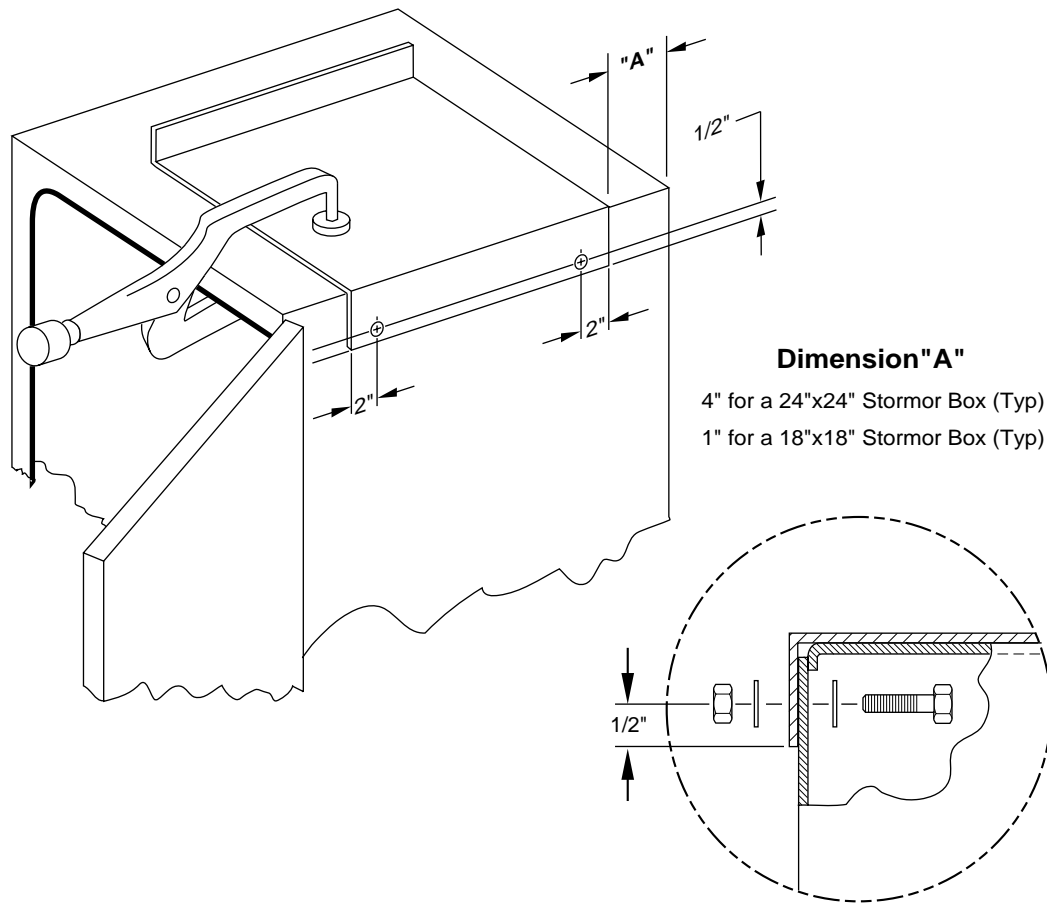
## STEP 4

### How to install the boxes onto the mounting tubes.

1. Position the box so that its mounting brackets align with and slide onto the lower mounting tubes. Slide the loose pair of mounting tubes up snug to the ends of the boxes as shown in Figures 4 and 5.
2. Tighten the four bolts that hold the each of the two pairs of mounting tubes together. Make sure the rubber shock absorbers are in place before tightening down these bolts. Tighten the nylon insert nuts.
3. Make sure the mounting brackets on the boxes are snug against the mounting tubes as shown in Figures 4 and 5.
4. Position the box in far enough so that the end of the mounting tubes is flush or protrudes a little from the mounting brackets.

# STORMOR Boxes

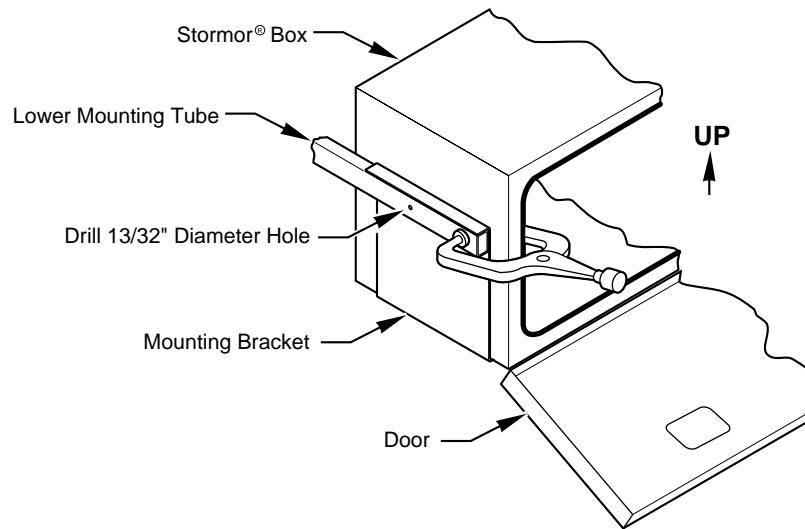
Figure 9



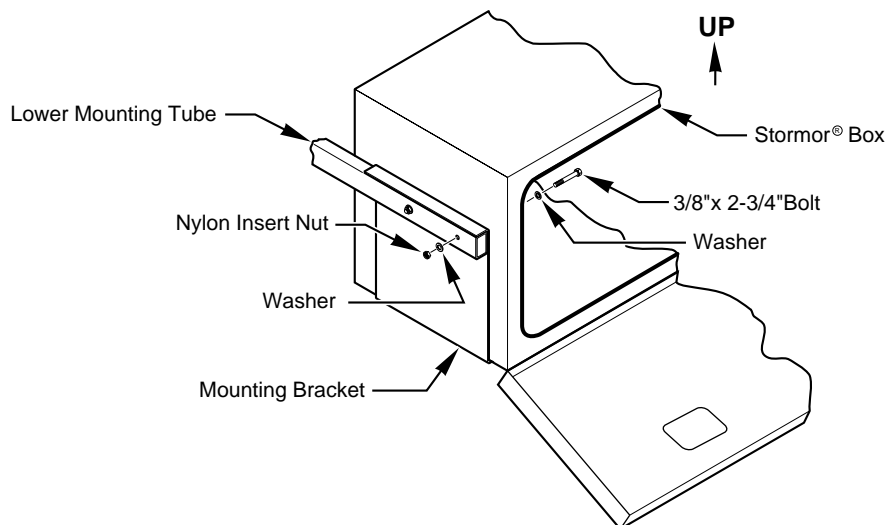
# STORMOR Boxes

5. Open the door of a box and use a clamp as shown in Figure 10 to temporarily hold the mounting bracket to the mounting tube. Using one of the pre-drilled holes in the mounting tube as a guide, drill a  $\frac{13}{32}$ " hole through the end of the box.
6. Insert a  $\frac{3}{8}$ " x  $2\frac{3}{4}$ " bolt in this hole with washers and tighten the nylon insert nut.
7. Remove the clamp and drill another  $\frac{13}{32}$ " hole in the box as shown in Figure 11.
8. Insert a  $\frac{3}{8}$ " x  $2\frac{3}{4}$ " bolt in this hole and tighten just as you did in Step 6 above.
9. Repeat Steps 5 through 8 for mounting the other end of the box to the lower mounting bracket.
10. If you are installing a box on the other side of the trailer, do so in the same way as you did with the first box. However, if you are mounting only one box, then you must install a stabilizer bar as described in Step 5.

**Figure 10**



**Figure 11**



## STEP 5

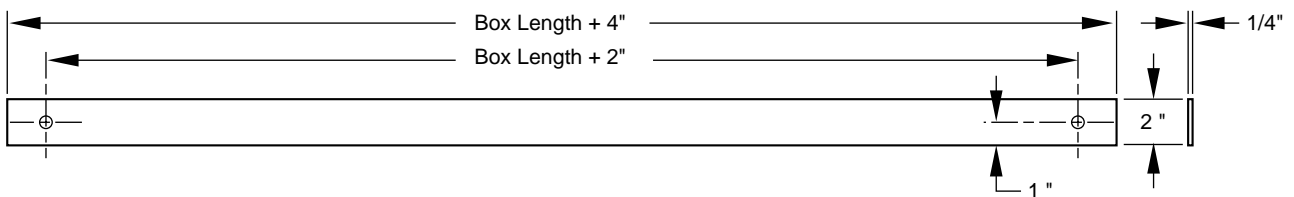
### How to install the stabilizer bar.

*(For single box mounting only)*

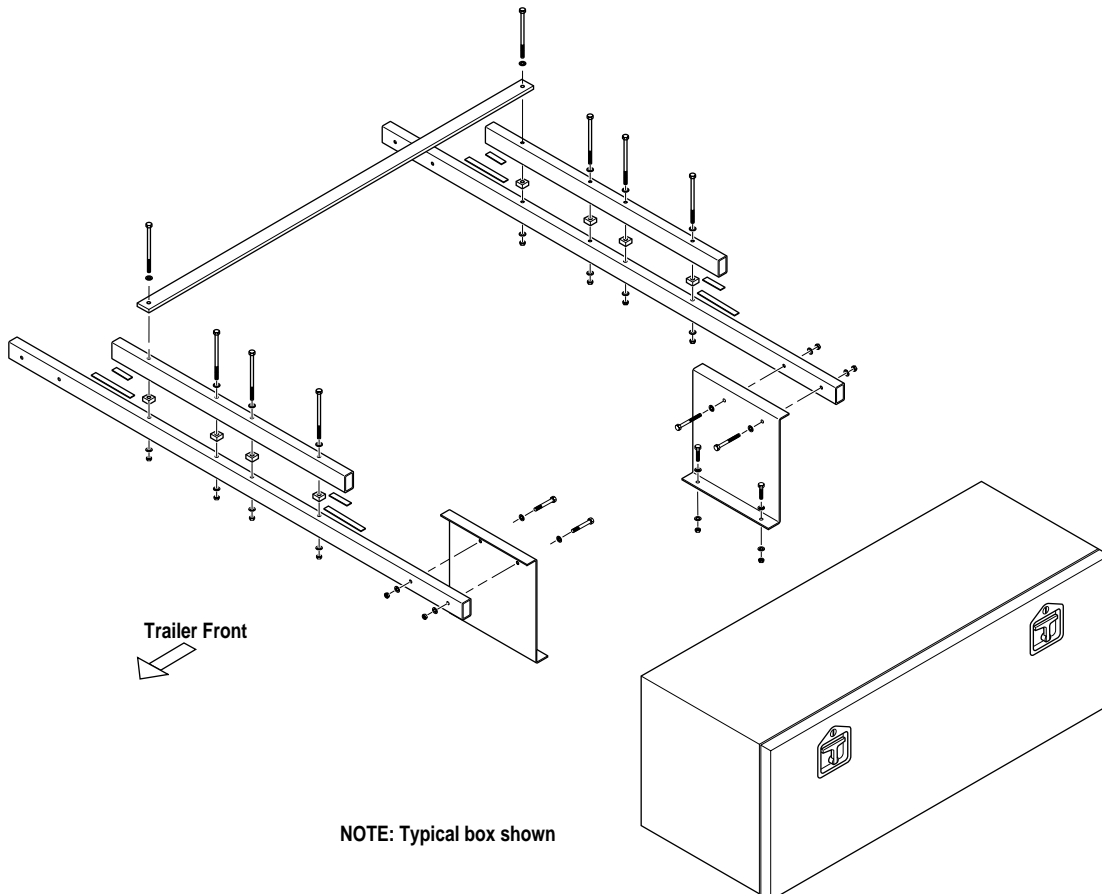
1. If you are mounting only one STORMOR box on your trailer, it is very important to install a stabilizer bar. Failure to do so will create a potentially hazardous assembly. After assembling the box as described in Step 4 you must now add the stabilizer bar on the opposite side of the trailer on which the box is mounted as shown in Figure 13.

Many kits will receive a stabilizer that is pre-cut for the length of the box ordered. If you need to re-size this part, cut the stabilizer bar as shown in Figure 12. Loosen and remove the two  $\frac{3}{8}$ " x  $7\frac{1}{2}$ " inch bolts on the mounting tubes that are located on the side of the trailer with no box. Install the stabilizer bar and reinsert the bolts as shown in Figure 13. Tighten the nylon insert nuts.

**Figure 12**



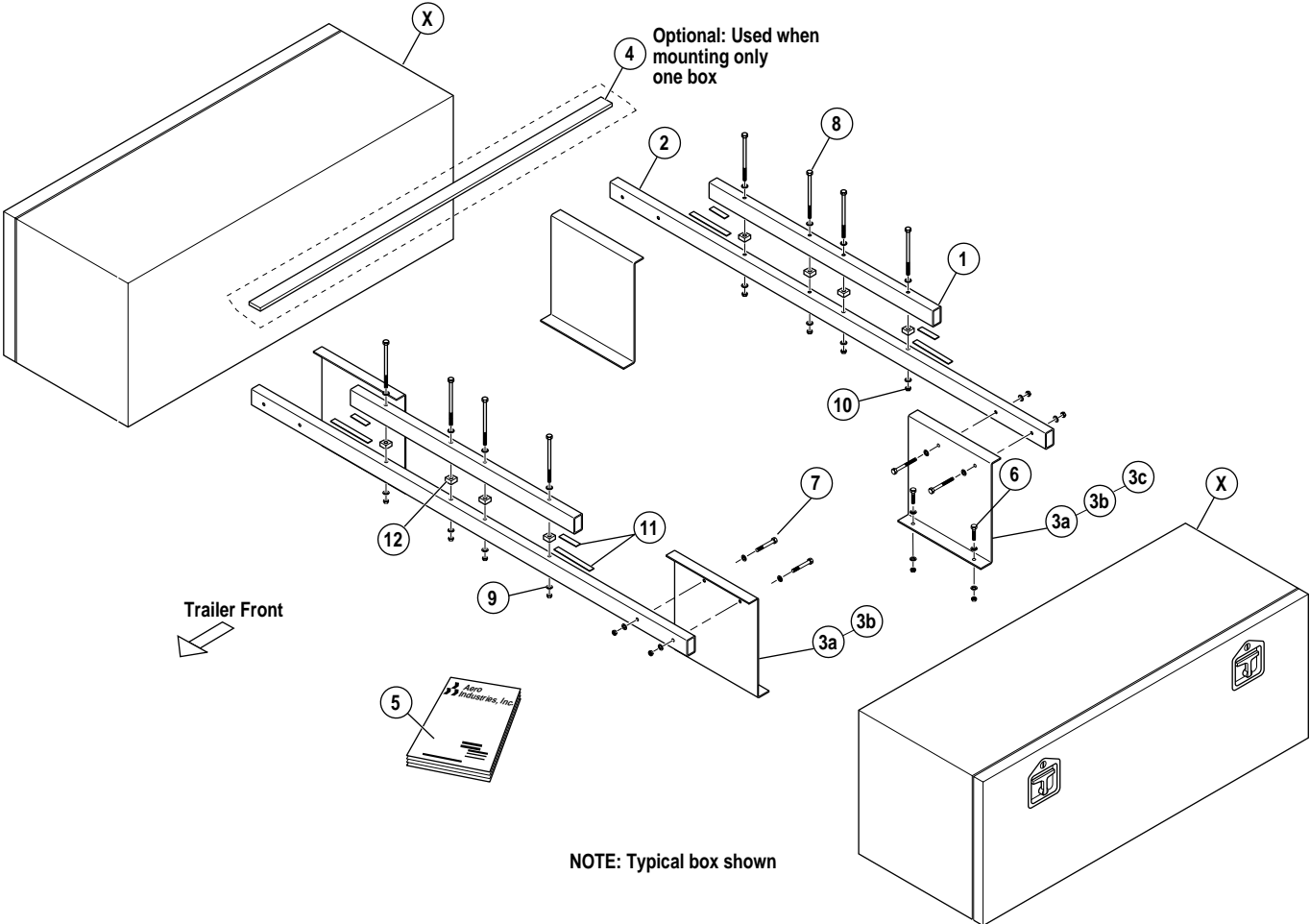
**Figure 13**



NOTE: Typical box shown

# STORMOR Boxes

## Double Box Mounting Kit – Exploded View



# STORMOR Boxes

## Double Box Mounting Kit - Parts List

| No. | Part No.    | Description                      | Qty. | No. | Part No.    | Description                        | Qty. |
|-----|-------------|----------------------------------|------|-----|-------------|------------------------------------|------|
| 1   | 0641-862000 | Mounting Tube Top                | 2    | *   | 0631-960666 | Hardware Package Dual Box Mtg      | 1    |
| 2   | 0631-862001 | Mounting Tube Bottom             | 2    | 6   | 0810-670656 | Bolt HHCS 3/8-16 x 1 1/4" GR8 Zinc | 8    |
| 3a  | 0630-860900 | Box Mounting Bracket 24"         | 4    | 7   | 0810-670662 | Bolt HHCS 3/8-16 x 2 3/4" GR8 Zinc | 8    |
|     | or          |                                  |      | 8   | 0810-670684 | Bolt HHCS 3/8-16 x 7 1/2" GR8 Zinc | 8    |
| 3b  | 0630-860901 | Box Mounting Bracket 18"         | 4    | 9   | 0820-680620 | Washer Flat 3/8" Zinc              | 96   |
|     | or          |                                  |      | 10  | 0815-660660 | Nut Hex 3/8-16 Zinc Nylon Insert   | 24   |
| 3a  | 0630-860900 | Box Mounting Bracket 24"         | 2    | 11  | 0765-618833 | Rubber Pad 1/16 x 3/4 x 4          | 8    |
| 3c  | 0630-860902 | Box Mounting Bracket 24" Special | 2    | 12  | 0765-618840 | Rubber Shock Absorber              | 8    |
| 4   | 0631-862003 | Stabilizer Bar                   | 1    |     |             |                                    |      |
| 5   | 0930-861810 | Installation Instructions        | 1    |     |             |                                    |      |
| X   |             | STORMOR Box                      |      |     |             |                                    |      |

\*Not shown

## How to Use the STORMOR Box:

1. Unlock the two latches in the door of the STORMOR box by using the keys provided.
2. Pull out on the two flush-mounted handles and rotate them 1/4 turn to unlatch the door on the STORMOR box. Lower the door to the fully open position.
3. Add, use or remove items from the STORMOR box as desired.
4. Return the door of the box to the closed position. Rotate the latch handles 1/4 turn to latch the door in the closed position.
5. Lock the latches and return the key to a secure location.

## How to Maintain the STORMOR Box.

1. All fasteners should be checked and kept tightened.
2. Replace all worn or damaged parts.

# You're Covered With Aero!

## WARRANTY

Aero products come with a one year warranty on all parts. It's another example of our ongoing commitment to customer satisfaction and quality.

## CUSTOMER SERVICE

1-800-535-9545

Our customer service technicians are trained to help you. Whether it's ordering, installation, or just general information on our products, you can count on expert advice from Aero.

© 2000 AERO INDUSTRIES, INC

0930-861810

01/01/01



INDIANAPOLIS, IN  
3010 W. Morris Street  
Indianapolis, IN 46221  
(800) 535-9545  
FAX (317) 244-1311

OMAHA, NE  
10308 South 144th St.  
Omaha, NE 68138  
(800) 535-8552  
FAX (402) 895-6129

HAMBURG, PA  
2nd & Grand  
Hamburg, PA 19526  
(800) 535-3665  
FAX (610) 562-0340

STREETSBORO, OH  
8540 St. Rt. 14, Suite A  
Streetsboro, OH 44241  
(888) 237-2262  
FAX (330) 626-3277

BURLINGTON, ONTARIO  
AERO-KIT INDUSTRIES  
3474 Mainway Drive  
Burlington, Ontario  
L7M 1A8  
(905) 335-2012  
FAX (905) 335-8499