

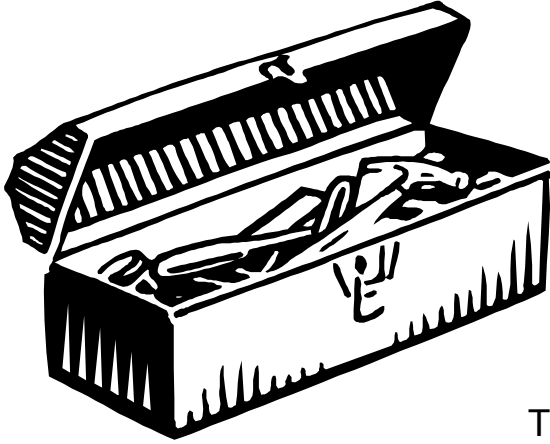


Dump Liner

Installation Guide



Tools Needed:



Tape Measure

Drill

5/16" Drill Bit

Chalk Line Maker

Cargo Jacks

Ratchet / Straps

Circular Saw

Aluminum / Steel Welder

INSTALLATION GUIDE

STEP 1.) Measure length of Body/Trailer, Measure length of Liner.

STEP 2.) Cut liner to proper length. (assumes 60° F - 75°F room temperature @ point of installation.)

Hot asphalt hauling = $(1 \frac{1}{2}'' * \text{Body length} / 10) + 1''$.

Example: 20' Bed = $(1 \frac{1}{2}'' * 20 / 10) + 1'' = 4''$ cut off end of liner

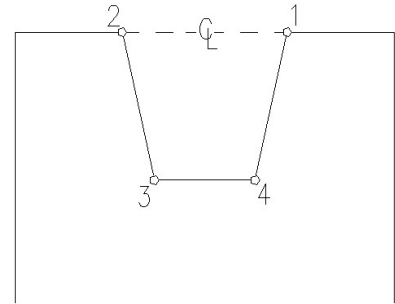
Cold load hauling (No Hot Asphalt) = $1'' * \text{Body Length} / 10$

Example: 20'bed = $(1'' * 20 / 10) = 2''$ cut off end of liner

NOTE – a polymer dump liner will expand and contract, based on the temperature of the load or the outside air temperature. The cut-off adjustment listed above should maximize the floor coverage of the liner when fully expanded.

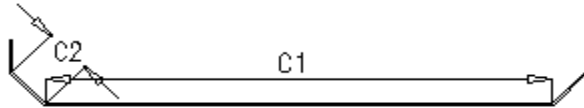
STEP 3.) Cut out the Doghouse/Bulkhead from the liner.

- a.) Helpful hint: Make a cardboard template for one side of the doghouse, flipping the template over should match the other side of the doghouse.
- b.) Mark centerline of the liner and Body/Trailer floor, both front and rear.
- c.) Measure the length and width of doghouse, mark accordingly from the centerline mark on the front of liner.
- d.) Align your cardboard template (step 3a.) with the front edge of the liner and doghouse markings (step 3c.) and draw your pattern to cut from.
- e.) Cut your doghouse/bulkhead pattern with a circular saw.

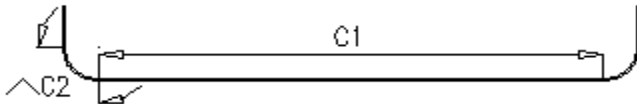


STEP 4.) Score the liner (3/8" and 1/2" thick liners only).

- a.) Measure the distance between cleanouts, "C1".
- b.) Measure the distance between cleanout width, "C2".



C1 = _____



C2 = _____

- c.) Mark your dimensions on the liner, front and rear, and snap a chalk line the length of the liner between dimensions.
- d.) Set your circular saw depth to score 2/3 the thickness of the liner.
example: 3/8" liner = 1/4" deep score
1/2" liner = 5/16" deep score.

Suggestion: Test your score depth on a scrap piece of liner from doghouse cutout.

e.) Score the liner on the chalk lines made in step 4c.

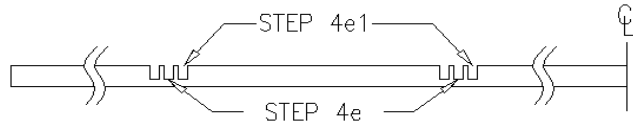
45 degree cleanout with 3/8" thick liner.

- 1.) Mark an additional score 1/8" from scores made in step 4e toward centerline of liner. (see example)



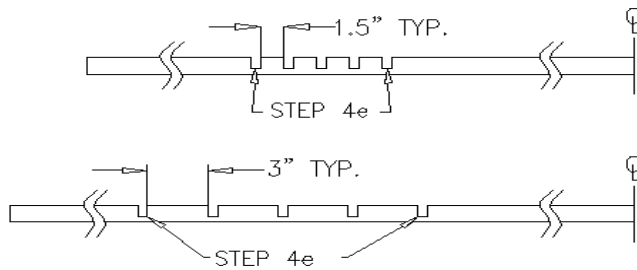
45 degree cleanout with 1/2" thick liner.

- 2.) Follow step 4e1 below, then add an additional score opposite of the step 4e1. (see example)



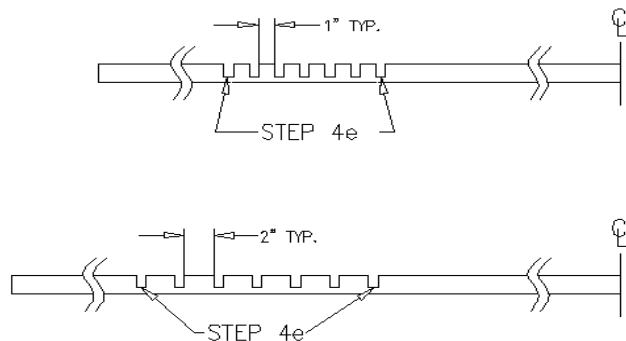
Radius Cleanouts with 3/8" thick liner.

- 1.) Use the chart to properly space your scores
6" Radius = 1-1/2" space between scores
12" Radius = 3" space between scores



Radius Cleanouts with 1/2" thick liner.

- 1.) Use the chart to properly space your scores.
6" Radius = 1" space between scores.
12" Radius = 2" space between scores.



90 degree corners (body/trailer with no cleanout plates) 3/8" thick.

- 1.) 4 scores, 1/8" apart, centered on 90 degree corner.

90° degree corners (body/trailer with no cleanout plates) 1/2" thick.
5 scores, 1/8" apart, centered on 90° degree corner.

STEP 5.) Fold the liner.

- a.) Place 4-5 C-clamps per side of liner, evenly spaced across from each other along length of the liner.
- b.) Connect Come-A-Long/Ratchet Strap to C-Clamps in step 5a and draw the liner tight into a U-Shape.

STEP 6.) Install the liner into the body/Trailer.

- a.) Remove the tailgate in order to slide the liner in the body/trailer.
WARNING: By not removing the tailgate, you risk serious injury or death if the tailgate drops from securement.
- b.) Slide the liner into the body/trailer.
- c.) Once your liner is completely inside the body/trailer, release and remove your Come-a-Long/Ratchet Straps, and C-Clamps used in step 5.

STEP 7.) Center and secure the liner.

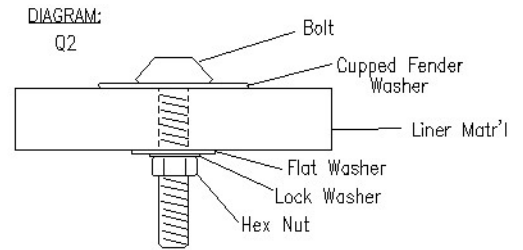
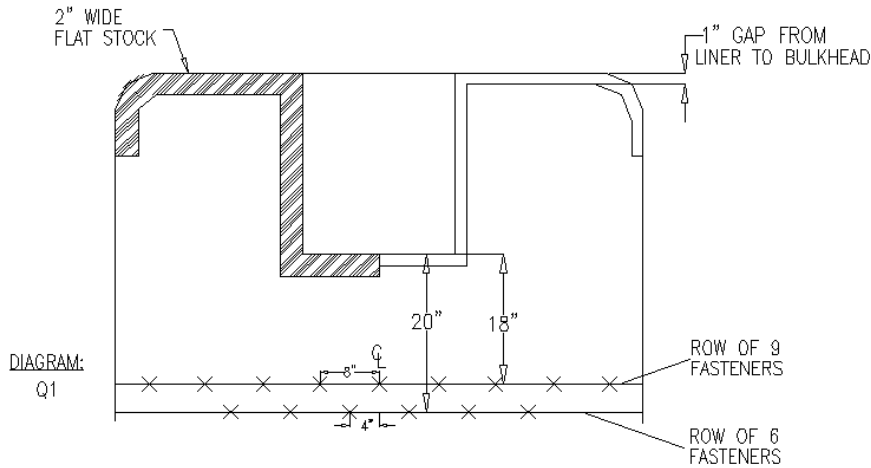
- a.) Center the liner with the body/trailer using the center marks made in step 3b.
- b.) Secure the liner to the floor at the end of the body/trailer with a C-Clamp.

STEP 8.) Bolt the liner to the floor.

Asphalt installation (use diagram Q1 to reference step a-h).

- a.) Space the front edge of the liner 1" from the bulkhead of the body/trailer. Keep in mind that you already cut 1" extra off during Step 2.
- b.) Using a tape measure, Measure 18" from the rear corner of the doghouse toward the rear of the liner and make a mark. This mark will be used to figure your location for the front row of fasteners. Make a second mark 20" from the rear of the doghouse toward the rear of the liner. This mark will be used to create your second row of fasteners.
 - Note: This measurement can vary based on the beam location in the dump unit
- c.) Measuring from the other corner of the doghouse repeat Step B, creating two marks at the 18" and 20" dimensions.
- d.) Using a chalk line, line up the two 18" points and snap a line across the liner. Do the same at the 20" points.
- e.) On the 18" line, mark the center, mark your first floor fasteners. Mark four floor fasteners every 8" to the right. Do the same for the left of the center floor fastener, every 8". You should use no more than 9 fasteners on this row.
- f.) On the 20" line, mark the center. Mark a fastener 4" right and 4" left from the center point. Mark two more fasteners 8" apart on each side. This should create a staggered bolt pattern, with 6 total fasteners.
- g.) Drill 5/16" holes on all marks made in Step 8e & 8f.
- h.) Install floor fasteners, reference diagram Q2 for proper bolt schematic.

OPTIONAL: Weld 2" wide flat-stock around bulkhead & doghouse on top of the liner to reduce aggregate contamination.



Cold Load Installation (Use Diagram Q3 to Reference to Reference Step a-g).

- a.) Make sure the front edge of the liner is as close to the bulkhead & doghouse as possible
- b.) Draw a line 5" from the front edge of the liner and the doghouse.
- c.) Draw a line 3" from the edge on each side of doghouse.
- d.) Evenly space 3 marks on each of the lines drawn in step b. (reference: (a))
- e.) Evenly space 2 marks on each of the lines drawn in step c. (reference: (b))
- f.) Add one more fastener mark 5" from sidewall and approx. 12" from front wall to dump (c).
- g.) Drill 5/16" holes on all marks made (a)(b)(c).
- h.) Install floor fasteners, reference diagram Q2 for proper bolt schematic..

OPTIONAL: Weld 2" wide flat stock around the bulkhead & doghouse on top of the liner.

